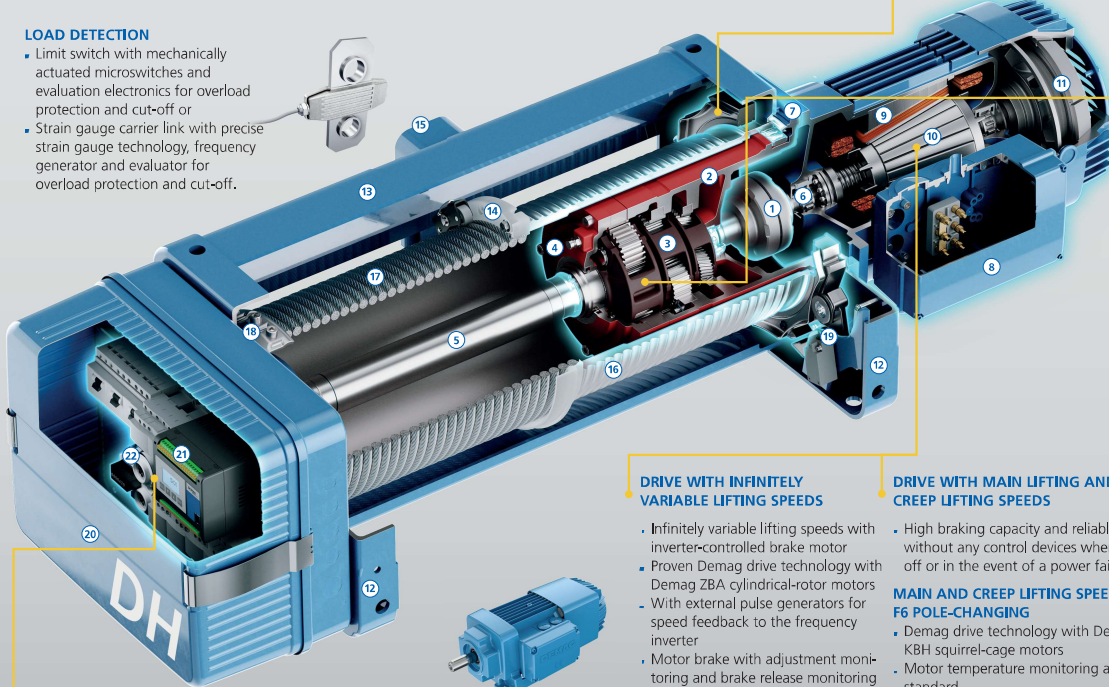


More than lifting

Demag DH. The hoist unit.

LOAD DETECTION

- Limit switch with mechanically actuated microswitches and evaluation electronics for overload protection and cut-off or
- Strain gauge carrier link with precise strain gauge technology, frequency generator and evaluator for overload protection and cut-off.

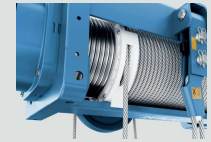


OPTIONAL ELECTRIC CONTROL EQUIPMENT

- Monitoring with evaluation unit, CAN bus compatible, smart linking of:
- DGS 4 geared limit switch for reliable cut-off of the hoist unit
- Electronic load monitoring and evaluation
- Smart features such as slack rope cut-off and load display

ROPE GUIDE

- Slack rope protection by closed rope guide
- Made of acid-resistant PA12
- Inclined pull of up to 4° without touching the rope guide
- Reinforced versions also available



ROPE DRUM BRAKE (OPTIONAL)

- Safety brake (also as a holding brake), acting directly on the rope drum



GEARBOX ASSEMBLY

- Space-saving planetary gearbox arrangement, integrated and protected inside the drum
- High safety and reliability and long service life thanks to load and output distribution
- High efficiency, low noise, lubricated for life



DRIVE WITH INFINITELY VARIABLE LIFTING SPEEDS

- Infinitely variable lifting speeds with inverter-controlled brake motor
- Proven Demag drive technology with Demag ZBA cylindrical-rotor motors
- With external pulse generators for speed feedback to the frequency inverter
- Motor brake with adjustment monitoring and brake release monitoring
- Motor temperature monitoring as standard

DRIVE WITH MAIN LIFTING AND CREEP LIFTING SPEEDS

- High braking capacity and reliable braking without any control devices when switching off or in the event of a power failure

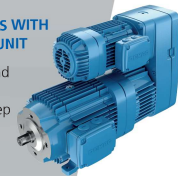
MAIN AND CREEP LIFTING SPEEDS WITH F6 POLE-CHANGING

- Demag drive technology with Demag KBH squirrel-cage motors
- Motor temperature monitoring as standard
- Main and creep lifting speeds with F6 pole-changing

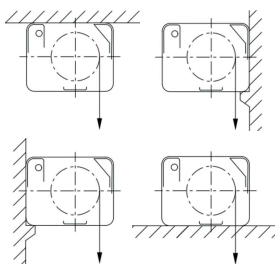
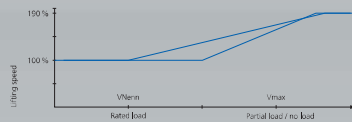


MAIN AND CREEP LIFTING SPEEDS WITH F10 MECHANICAL MICRO SPEED UNIT

- Demag drives with Demag KBH and KBA squirrel-cage motors
- Separate motors for main and creep lifting motions
- Particularly precise positioning



PRO-HUB: INCREASED LIFTING SPEEDS IN THE PARTIAL LOAD RANGE



HOIST DRIVE

- Roller star coupling
- Gearbox
- Planetary gear (2, 3 or 4 stages)

- Bleed valve
- Connecting shaft
- Motor shaft
- A-side bearing shield

- Terminal box
- Stator
- Rotor
- Hoist brake

HOIST FRAME

- Base flange
- Frame
- Rope guide rope fix points
- Rope fix point 4/1

- Rope drum
- Rope
- Rope anchorage
- Rope drum brake

ELECTRIC EQUIPMENT

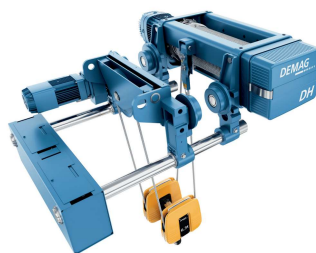
- Electric equipment cover
- Control (hoist, trolley)
- Geared limit switch (4 positions)

DEMAG

www.demagcranes.com



Direct connection of Demag F-DH hoist units



EK-DH low-headroom monorail hoist



EU-DH standard-headroom monorail hoist



EZ-DH double-rail crab